

MDOT
190-019-030-285-00
16.02 Ac

pt. of 190-019-050-100-00

190-019-040-026-00
1.15 Ac

190-019-040-034-00
2.05 Ac

190-019-040-040-00
1.65 Ac

190-019-040-048-00
1.28 Ac

400-315-00

400-310-02

310-00

310-01

310-03

400-050-00
21.12 Ac

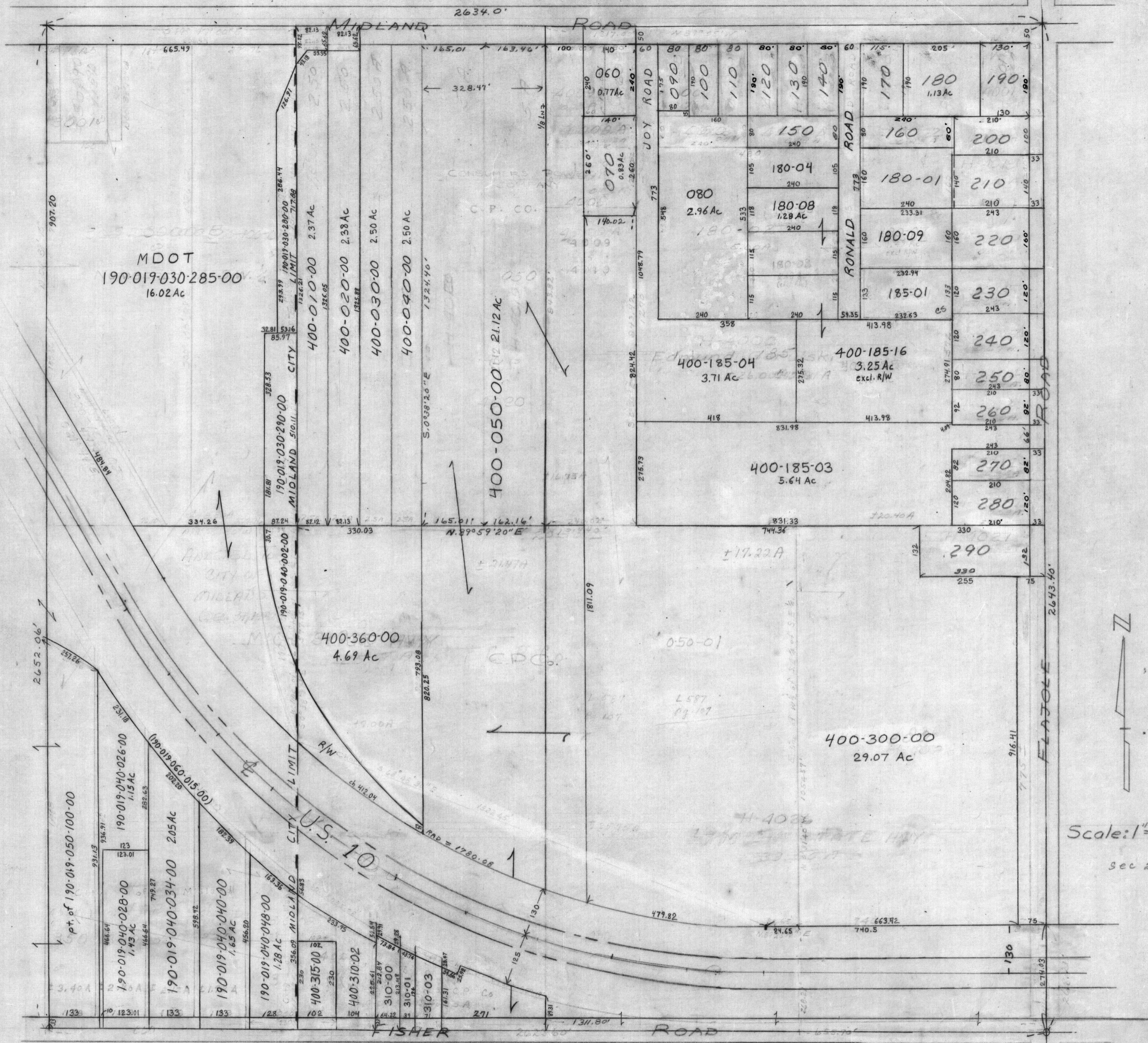
400-360-00
4.69 Ac

400-300-00
29.07 Ac

400-185-03
5.64 Ac

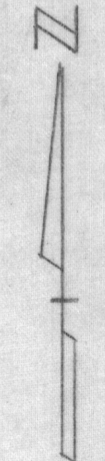
400-185-04
3.71 Ac

400-185-16
3.25 Ac
excl. R/W



400-019-040-019-400-
S.E. 1/4 SECTION 19
T.14N R.3E.

Scale: 1"=200'
sec 20



sec 29